



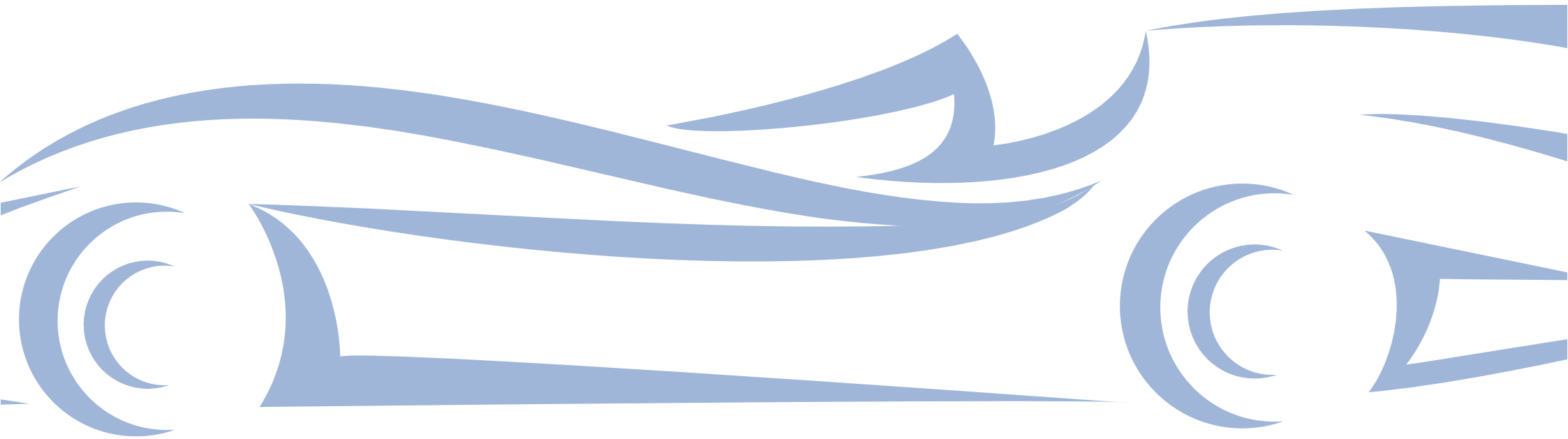
BLUE BIRD HOUSE

A stylish collection of 2, 3 & 4
bedroom houses and 2 bedrooms

 WEETMAN



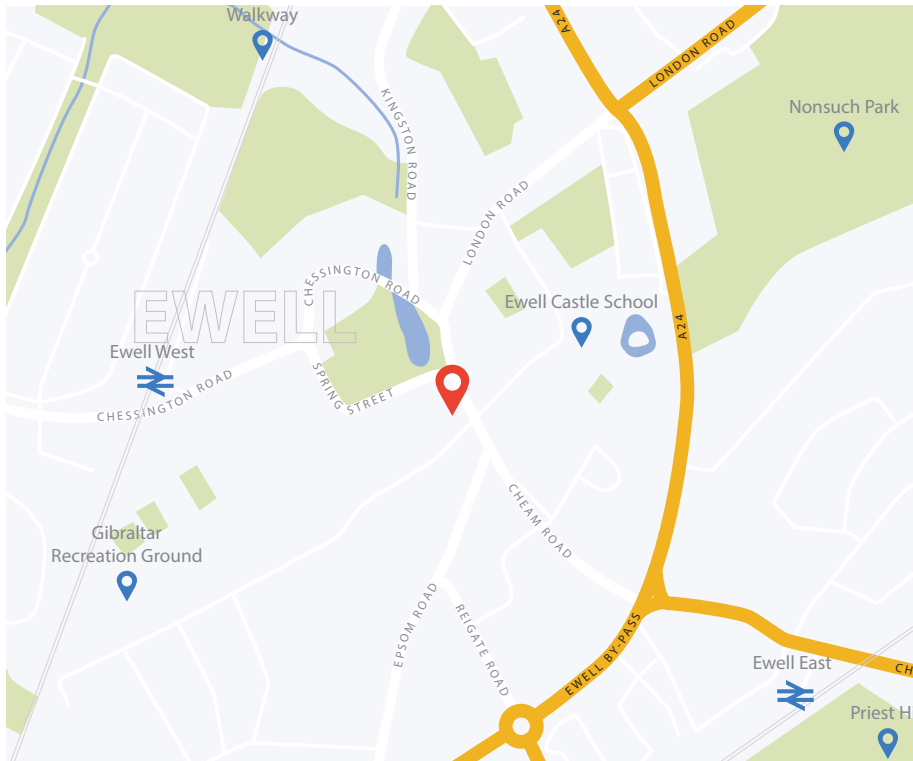
BLUE BIRD HOUSE





BLUEBIRD HOUSE

A contemporary development of 14 elegant new homes – each offering a rare combination of style and individuality – located in an exclusive, private community in North Surrey. Affording a full range of properties incorporating a number of spacious one bedroom units, several stunning two bedroom/two bath apartments with private outside space, a beautiful two bedroom Mews House and a pair of unique three bedroom dwellings – this modern, suburban development will appeal to a wide spectrum of buyers.



LOCATION

Able to trace its history back to the Domesday Book in around 1100 AD and a favourite hunting ground for King Henry VIII, Ewell is now a leafy North Surrey village located only 12 miles south of Central London and 2 miles north-east of Epsom town centre. Located on the lower slopes of the North Surrey Downs, immediately outside the boundary of Greater London, Ewell is regarded as a peaceful, family oriented area which is conveniently positioned for access back into The City, Kingston, Epsom and, of course, the world famous Race Course.

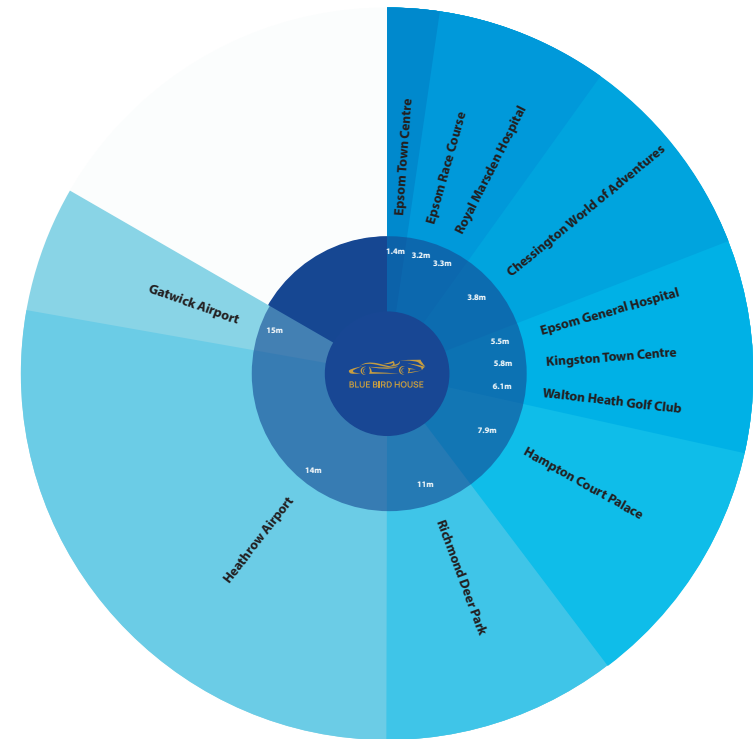


WEETMAN

Established in 2019, Weetman is a rapidly expanding investment and development company which already boasts an enviable portfolio of both residential and commercial properties in the South East of England. Weetman targets investments within the “prime outer commute belt” – always looking for quality development opportunities which provide strong connectivity back into Central London.

LOCATION

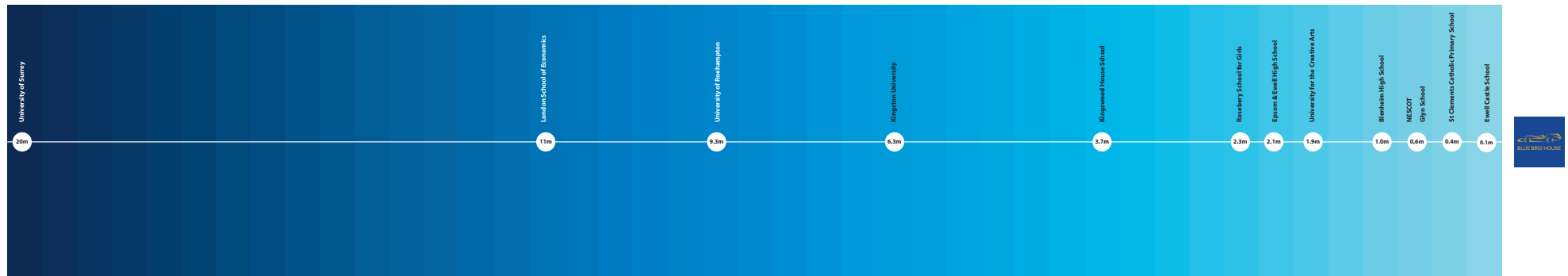
Able to trace it's history back to the Domesday Book in around 1100 AD and a favourite hunting ground for King Henry VIII, Ewell is now a leafy North Surrey village located only 12 miles south of Central London and 2 miles north-east of Epsom town centre. Located on the lower slopes of the North Surrey Downs, immediately outside the boundary of Greater London, Ewell is regarded as a peaceful, family oriented area which is conveniently positioned for access back into The City, Kingston, Epsom and, of course, the world famous Race Course.





EDUCATION

As a family oriented area, the Borough of Epsom & Ewell offers a plethora of exceptional educational facilities including Ewell Castle School (Private, Mixed, 3 - 18), Glyn School (Boys, Secondary & sixth form), Rosebery School (Girls, Secondary, 11 - 18), Blenheim High (Co-ed, 11 - 18) and Epsom College (Private, mixed, Independent, 11 - 18).

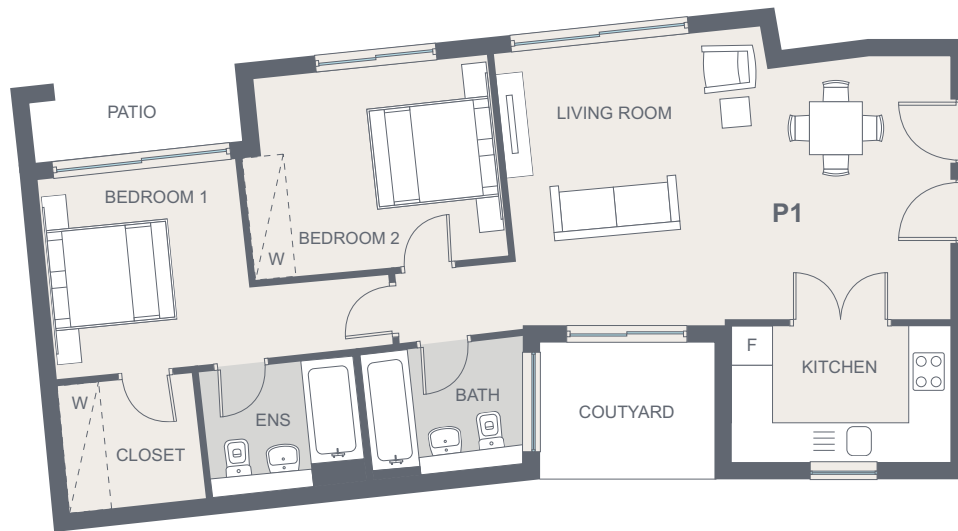


HISTORY

The Bluebird House development is a contemporary office/residential complex comprising several individual buildings. Bluebird House itself will become home to 10 highly individual, luxury apartments including a stunning penthouse unit with a sumptuous & extensive roof terrace; The Granary will be converted into a stylish two bedroom/two bathroom Mew House and a substantial one bedroom first floor apartment, whilst The Works – formerly the home of J Jameson Engineering, who produced several parts of Malcolm Campbell's world record setting car in the 1930's – will become a pair of beautiful three bedroom/two bathroom houses, each with private outside space, a roof terrace and parking.



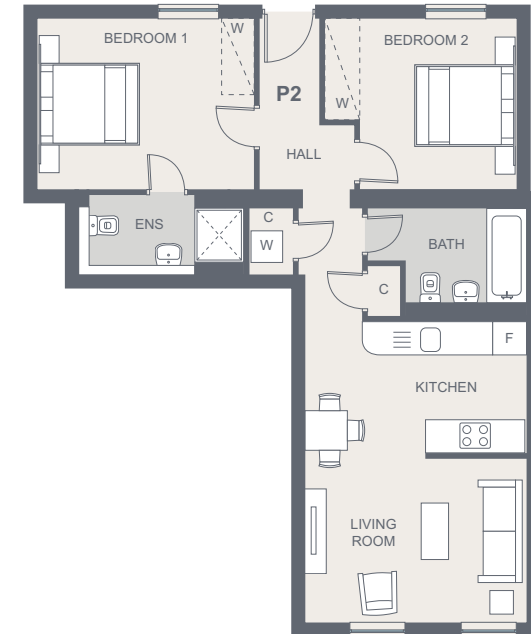




**BLUE BIRD HOUSE
GROUND FLOOR FLAT 01**

Area: 1234 sq.ft / 141 sq.m

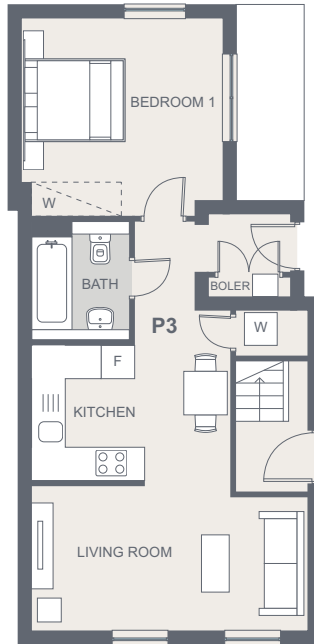
Bedrooms: Floor 1 **Reception:** Floor 2



**BLUE BIRD HOUSE
GROUND FLOOR FLAT 02**

Area: 1234 sq.ft / 141 sq.m

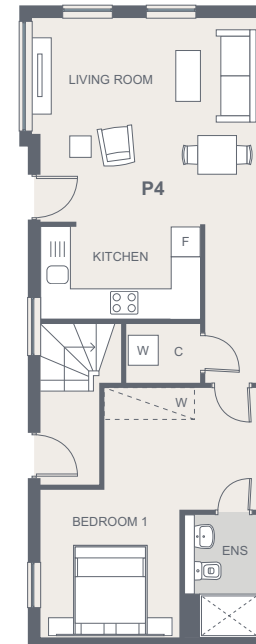
Bedrooms: Floor 1 **Reception:** Floor 2



**BLUE BIRD HOUSE
GROUND FLOOR FLAT 03**

Area: 1234 sq.ft / 141 sq.m

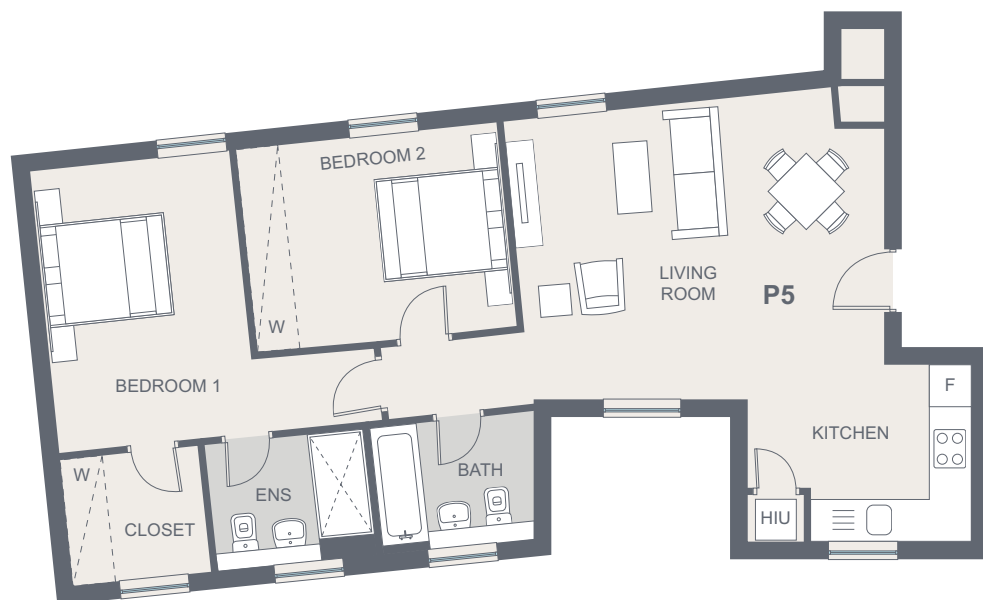
Bedrooms: Floor 1 **Reception:** Floor 2



**BLUE BIRD HOUSE
GROUND FLOOR FLAT 04**

Area: 1234 sq.ft / 141 sq.m

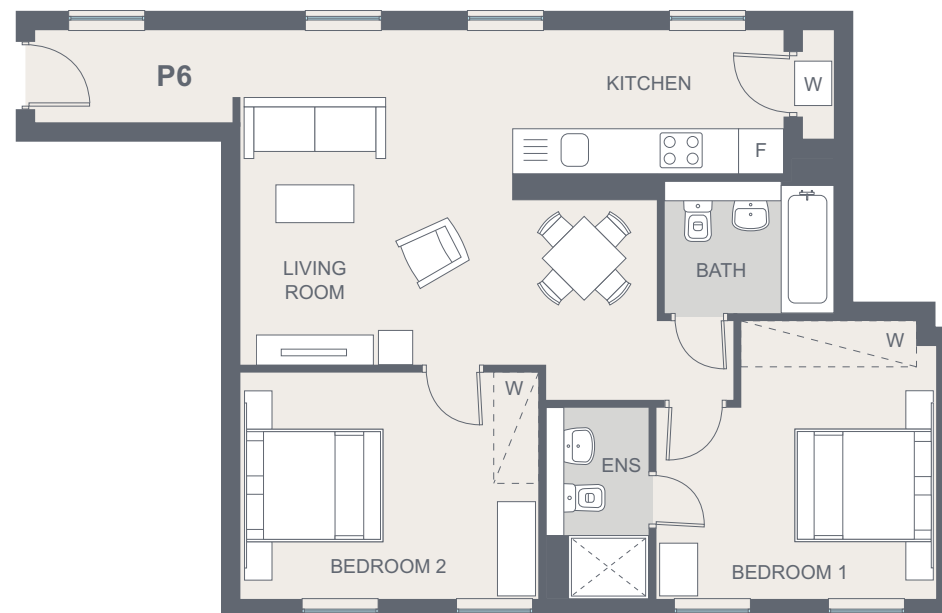
Bedrooms: Floor 1 **Reception:** Floor 2



BLUE BIRD HOUSE
FIRST FLOOR FLAT 05

Area: 1234 sq.ft / 141 sq.m

Bedrooms: Floor 1 **Reception:** Floor 2



BLUE BIRD HOUSE
FIRST FLOOR FLAT 06

Area: 1234 sq.ft / 141 sq.m

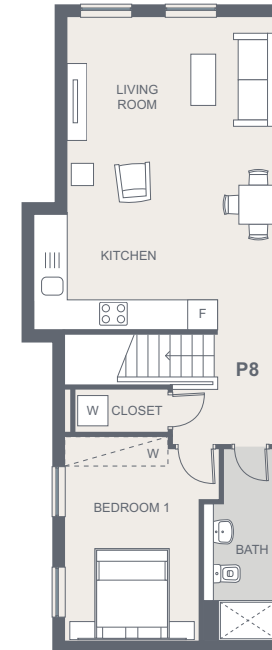
Bedrooms: Floor 1 **Reception:** Floor 2



BLUE BIRD HOUSE
FIRST FLOOR FLAT 07

Area: 1234 sq.ft / 141 sq.m

Bedrooms: Floor 1 **Reception:** Floor 2



BLUE BIRD HOUSE
FIRST FLOOR FLAT 08

Area: 1234 sq.ft / 141 sq.m

Bedrooms: Floor 1 **Reception:** Floor 2



BLUE BIRD HOUSE
SECOND FLOOR FLAT 09

Area: 1234 sq.ft / 141 sq.m

Bedrooms: Floor 1 **Reception:** Floor 2



BLUE BIRD HOUSE
SECOND FLOOR FLAT 10

Area: 1234 sq.ft / 141 sq.m

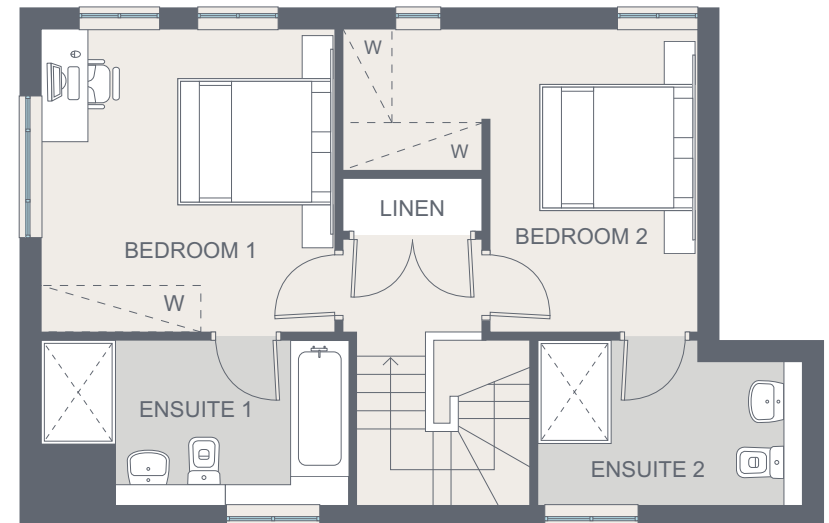
Bedrooms: Floor 1 **Reception:** Floor 2



THE GRANARY 1
GROUND FLOOR FLAT 01

Area: 1234 sq.ft / 141 sq.m

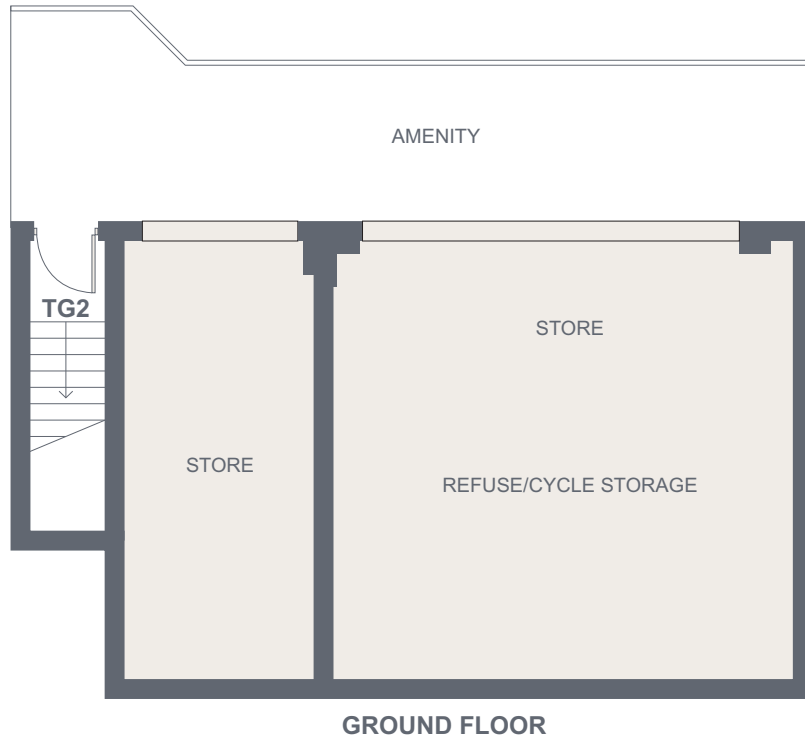
Bedrooms: Floor 1 **Reception:** Floor 2



THE GRANARY 1
FIRST FLOOR FLAT 01

Area: 1234 sq.ft / 141 sq.m

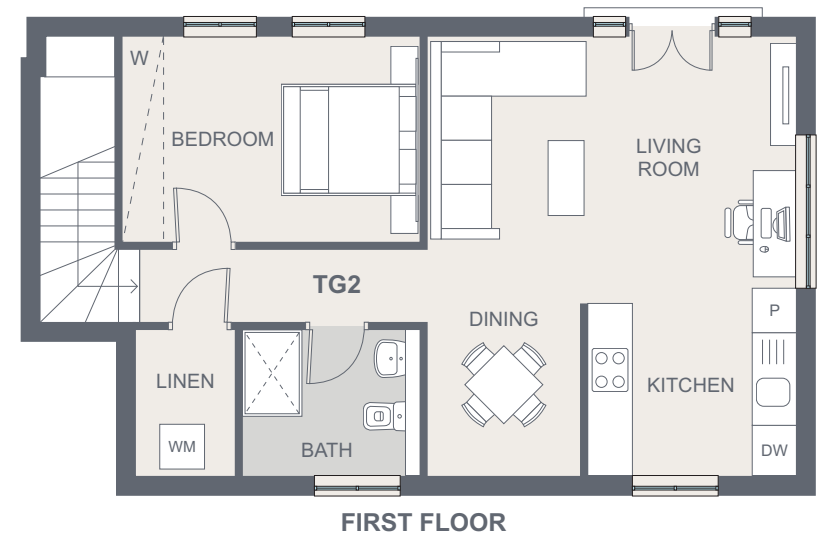
Bedrooms: Floor 1 **Reception:** Floor 2



THE GRANARY 2
GROUND FLOOR FLAT 01

Area: 1234 sq.ft / 141 sq.m

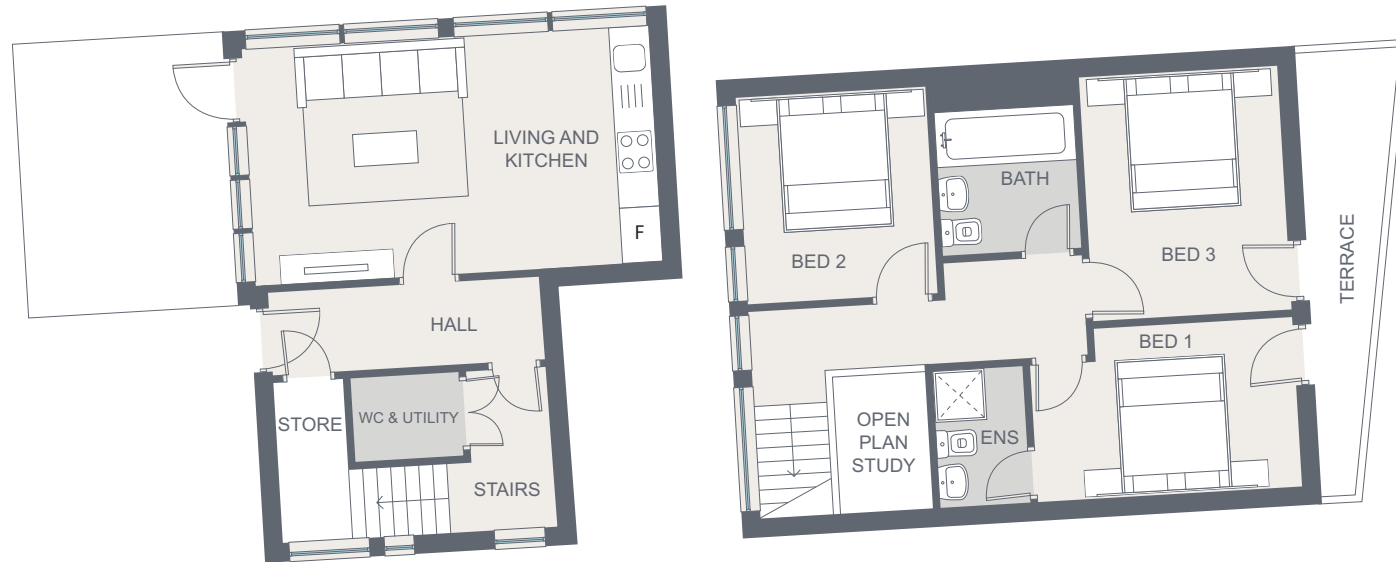
Bedrooms: Floor 1 **Reception:** Floor 2



THE GRANARY 2
FIRST FLOOR FLAT 01

Area: 1234 sq.ft / 141 sq.m

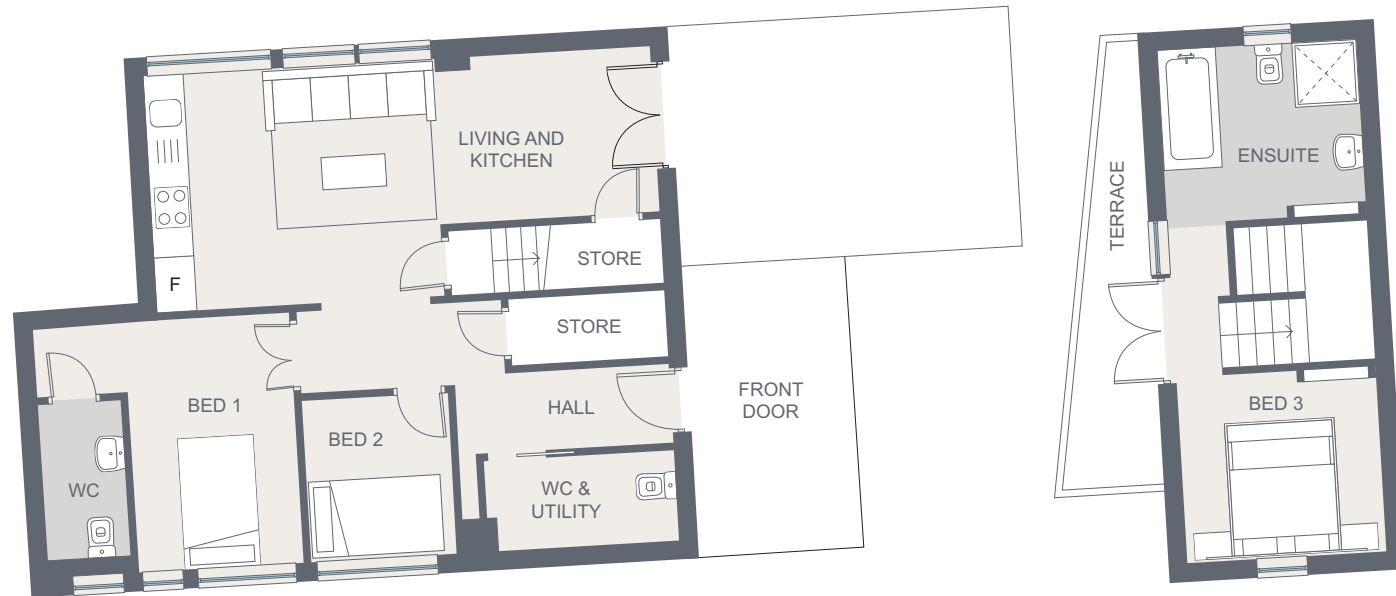
Bedrooms: Floor 1 **Reception:** Floor 2



HOUSE 1

Area: 1234 sq.ft / 141 sq.m

Bedrooms: Floor 1 Reception: Floor 2



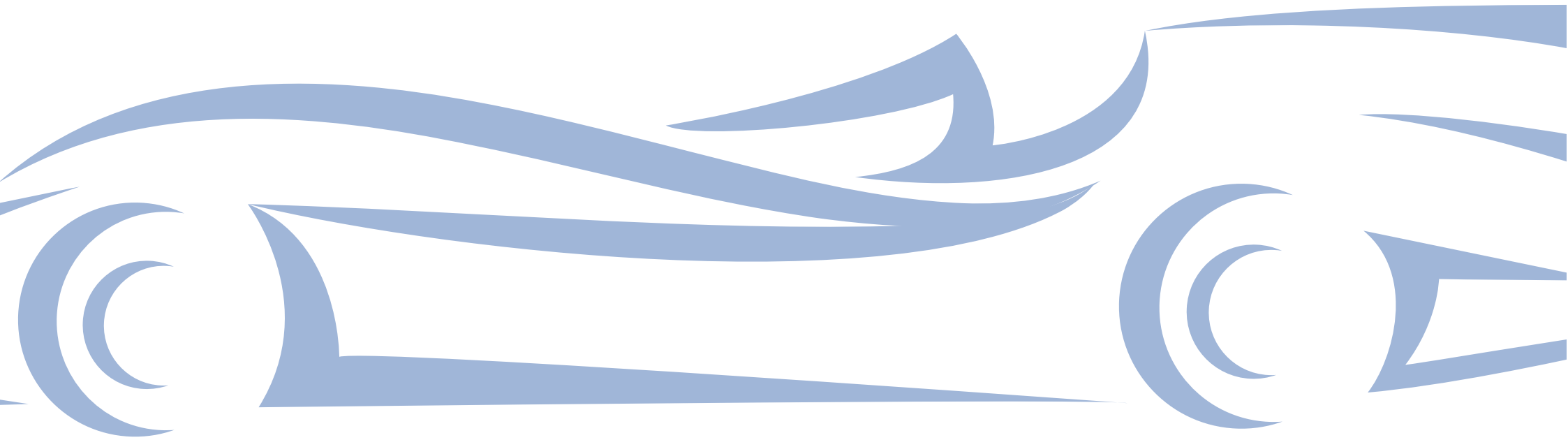
HOUSE 2

Area: 1234 sq.ft / 141 sq.m

Bedrooms: Floor 1 **Reception:** Floor 2



BLUE BIRD HOUSE





**Commercial & residential property specialists in
the South East of England**

www.weetman.co.uk